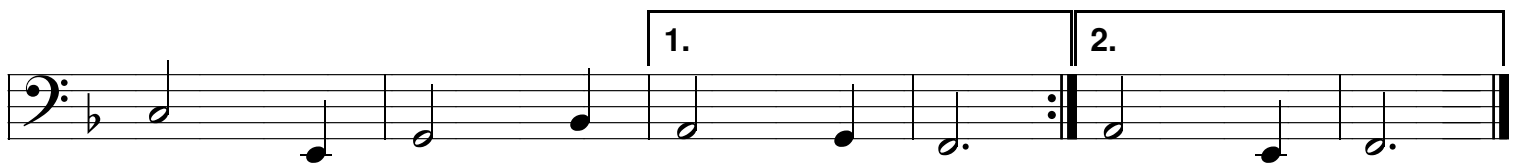
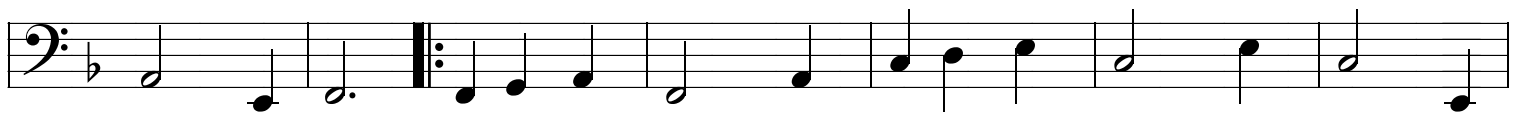
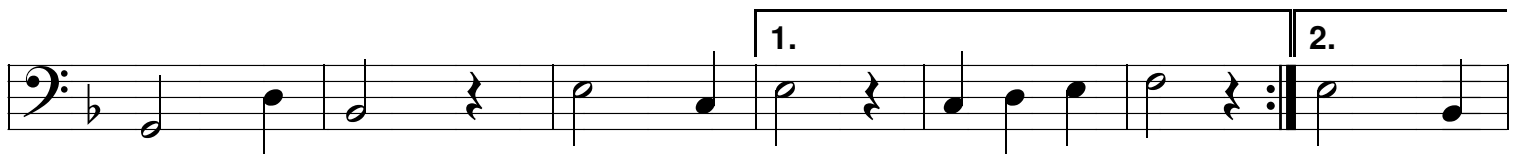
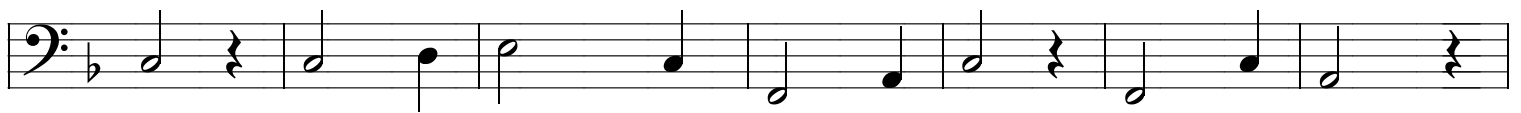
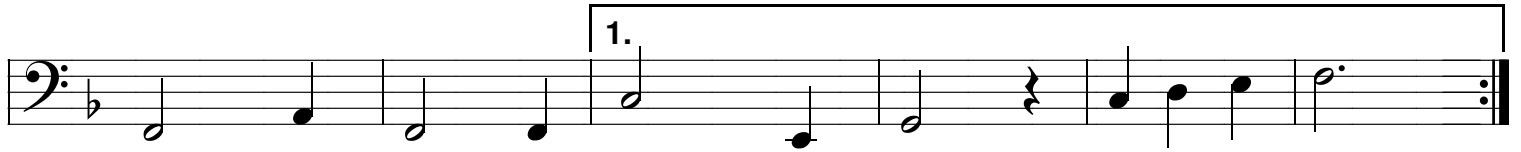
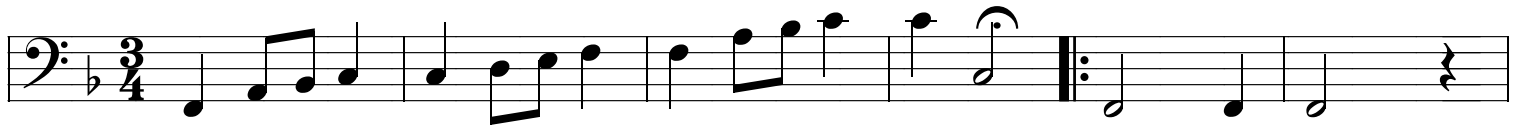


127. Rozenwals van Achtel

Stg. Kempische Muziek en Dans

Staff 5 - F sleutel

Uit: Oude dansen uit Achtel II
Vlaams dansarchief, Schoten 1972

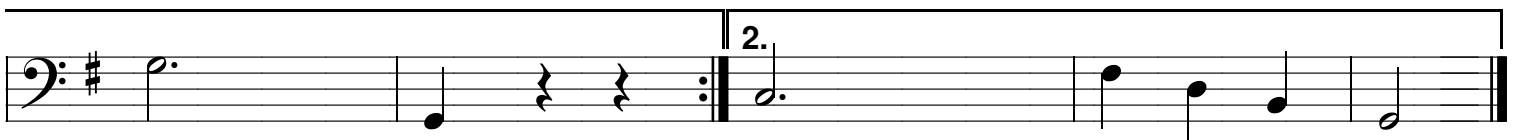
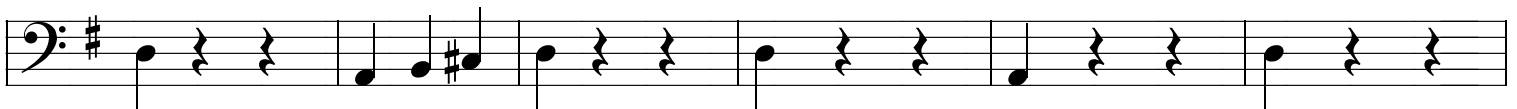
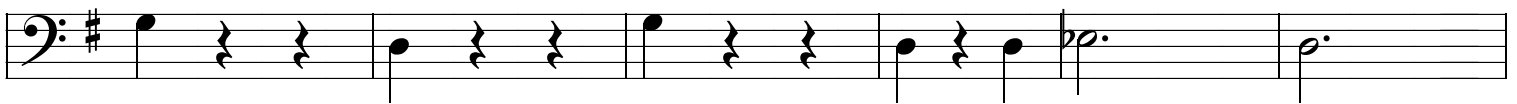
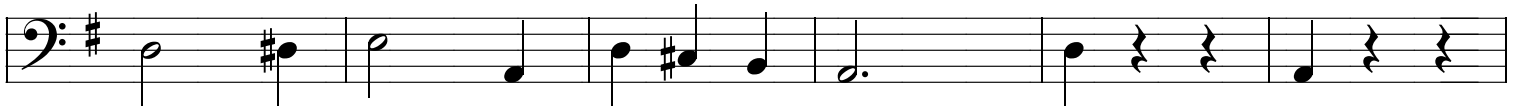
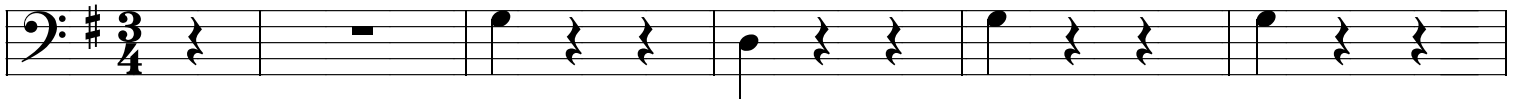


129. Ukuara wals

Strg. Kempische Muziek en Dans

A.Pärt

Arr. Ad van Sleeuwen



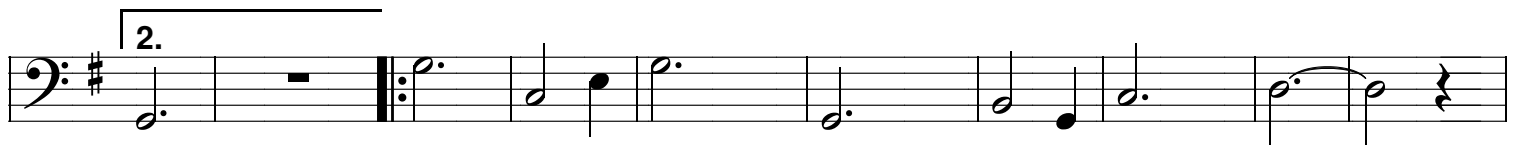
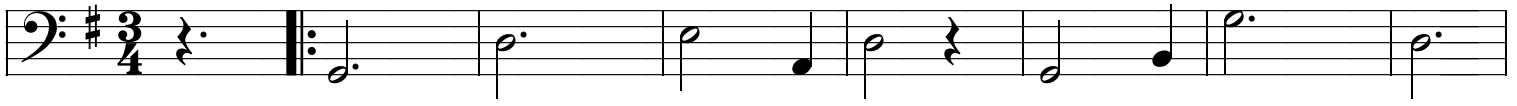
130. Belgarth Waltz

Stg. Kempische Muziek en Dans

F sleutel

Brian O'hEdhra

♩ = 125



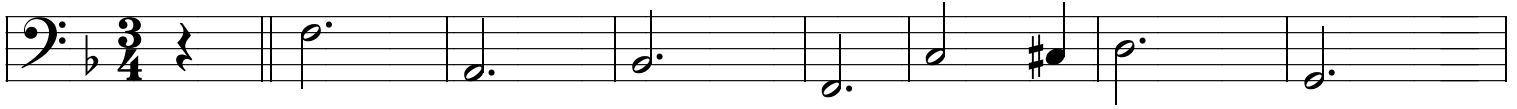
131. Hongaarse Mazurka

Stg. Kempische Muziek en Dans

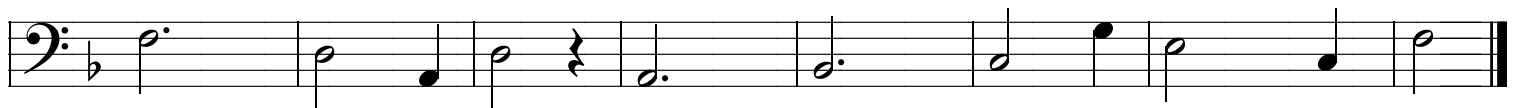
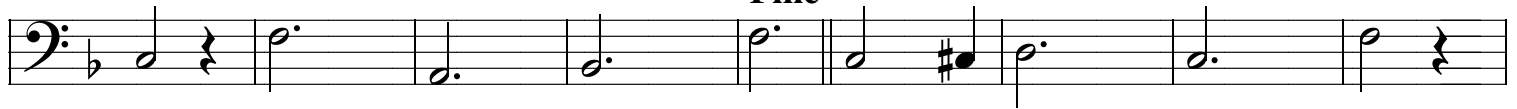
4x AB + 1x A

F sleutel

A



Fine B



132. Amerikaanse potpourri

Stg. Kempische Muziek en Dans

1. Charles Lynch's Waltz

1. Charles Lynch's Waltz

3/4

1. 2.

1. 2.

3/4

Detailed description: This block contains the musical notation for 'Charles Lynch's Waltz'. It consists of three staves of music in bass clef with a key signature of one sharp (F#) and a 3/4 time signature. The first staff begins with a repeat sign and contains six measures of music. The second staff has a first ending bracket over the first two measures and a second ending bracket over the next four measures. The third staff continues the melody and includes a 3/4 time signature change at the end.

2. Cajun Waltz

2. Cajun Waltz

3/4

1. 2.

1. 2.

Detailed description: This block contains the musical notation for 'Cajun Waltz'. It consists of three staves of music in bass clef with a key signature of one sharp (F#) and a 3/4 time signature. The first staff contains six measures of music. The second staff has a first ending bracket over the first two measures and a second ending bracket over the next four measures. The third staff continues the melody and includes a 3/4 time signature change at the end.

3. The banks of the river Dee

3. The banks of the river Dee

Detailed description: This block contains the musical notation for 'The banks of the river Dee'. It consists of four staves of music in bass clef with a key signature of one sharp (F#). The first staff begins with a whole rest followed by five measures of music. The second staff contains six measures of music, including a repeat sign. The third staff continues the melody with six measures. The fourth staff concludes the piece with six measures and a final double bar line.

133. La valse des bois

Stg. Kempische Muziek en Dans

Staff 5 - F sleutel

First musical staff in bass clef with a key signature of one sharp (F#) and a 3/4 time signature. It begins with a repeat sign. The melody consists of quarter notes: F#2, G2, A2, B2, C3, D3, E3, and F#3. The final measure contains a first ending bracket over a quarter note F#3 and a quarter rest, ending with a double bar line.

Second musical staff in bass clef with a key signature of one sharp (F#). It starts with a second ending bracket over a quarter rest, followed by a repeat sign. The melody continues with quarter notes: F#2, G2, A2, B2, C3, D3, E3, and F#3. The final measure contains a second ending bracket over a quarter note F#3 and a quarter rest, ending with a double bar line.

Third musical staff in bass clef with a key signature of one sharp (F#). It begins with a first ending bracket over the entire staff. The melody consists of quarter notes: F#2, G2, A2, B2, C3, D3, E3, and F#3. The final measure contains a first ending bracket over a quarter note F#3 and a quarter rest, ending with a double bar line.

Fourth musical staff in bass clef with a key signature of one sharp (F#). It starts with a second ending bracket over the entire staff. The melody consists of quarter notes: F#2, G2, A2, B2, C3, D3, E3, and F#3. The final measure contains a second ending bracket over a quarter note F#3 and a quarter rest, ending with a double bar line.